

The logo for Sefa, featuring a stylized blue 'S' followed by the word 'efa' in a lowercase, sans-serif font.

HEAT TRANSFER TECHNOLOGIES

The Future
of Heat Transfer
Business.

A close-up photograph of industrial machinery, likely a heat exchanger or heat transfer component. The equipment is dark grey or black with a prominent silver-colored corrugated metal hose. A white label with the 'Sefa' logo is visible on the right side of the machine. The background is a dark, geometric pattern of blue and teal triangles.

• Sefa •

INDEX

ABOUT US

5

TEAM

6

HISTORY

8

PRODUCT RANGE

9

10

ECO RANGE

Space-saving economical clam press that is affordable and easy to use.

12

CLAM RANGE

Robust heat press with drawer plate, ideal for medium production.

14

ROTEX RANGE

The swing head allows easy access to the work area for medium production.

18

DUPLEX RANGE

Equipped with ample space for high production with double plates.

22

SPORT RANGE

Great for creating extra value with club / team branding.

24

LOGO RANGE

Easily apply transfers to caps, pockets, sleeves and bags.

30

LARGE FORMAT

Designed and built for large scale and high-volume production runs.

37

DTG RANGE

Designed to ensure fixation of inks to garments for DTG applications.

We offer more creative & efficient products more than what you can think.

Sefa has been for more than 50 years, French designer and manufacturer of heat transfer presses for textile industry and sublimation market on solid materials. With an international experience and a recognized quality of products, SEFA offers standard or personalized solutions to transfers on T-shirts, sporting goods, caps, luggage, cups, mousepads and other items of visual and photographic communication. Our wide range of presses extends from the single-tray manual press for a launch of activity, to the large-format sublimation press for Chromaluxe applications, to the double-position pneumatic press for higher production rates. More recently, we have come to add to our presses preprocessing and drying solutions for direct printing applications.

ABOUT THE GROUP

The synergy within the FlexDev group is strong. Through it, we are delivering a powerful response to global textile-marking requirements.

Chemica was taken over in 2005 by Jean-Jacques Doassans, a former company manager in the PPR group (now Kering), who has skilfully guided Chemica's transition to a growing company driven by innovation. Over the last decade, Chemica has focused on offering an ever-expanding range of heat-adhesive films that have set new standards in thinness, trend-leading "Fashion" motifs and 3D effects.

Chemica has followed the rise of digital print technology and the development of custom design solutions by bringing out printable versions of its heat-adhesive transfer films that can be used with a large range of inks and printers. With subsidiaries opening in the USA in 2007 and Hong Kong in 2011, Chemica has become a global name in textile marking.

In 2009, the company assumed its group status with the purchase of French heat-press manufacturer SEFA. The Italian heat-transfer screen printing manufacturer Stilscreen added its reputation and expertise in heat transfer applications for sportswear when it became a member of the group in 2012. The group continues to work with big-name brands including Adidas, Nike and Puma, as well as with leading football clubs such as AC Milan, Olympique Lyonnais, and many more. Chemica currently sells its products in over 75 countries worldwide, primarily through its distribution network. Our company enjoys a reputation



for highly stable, high-quality products, most of which are certified as harmless to babies' skin in compliance with OEKO-TEX Standard 100 Class 1.

The company moved to new, more production-friendly premises in January 2015, increasing productivity and storage capacity. These new facilities give us the potential to expand our manufacturing plant in line with rising demand. The group has also added to its content through the acquisition of the English textile custom-marking specialist Elms Marketing in 2016. Elms Marketing works for some of Europe's major football teams, as well as big-name brands including Umbro, NFL, NBA, and others.

Naturally, Elms uses Chemica heat-adhesive films and printable media, and Stilscreen screen-printing transfers, all applied using Sefa heat presses.

Director Statement



—
**WE ALWAYS TRY TO
GIVE MORE VALUE &
INNOVATION TO THE
BUSINESS NEEDED.**

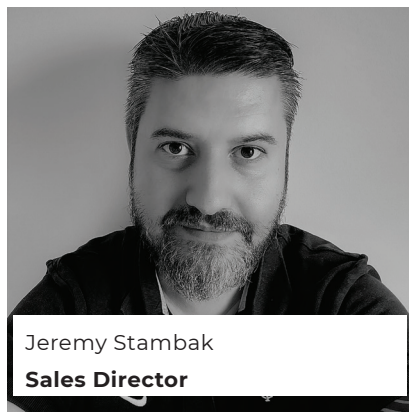


Daniel Dumas
Managing Director



THE TEAM

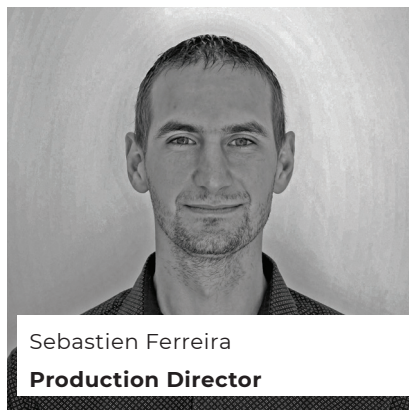
—
Each member of our team is a specialist in its field. Together, we make sure you're investing in the best product.



Jeremy Stambak
Sales Director



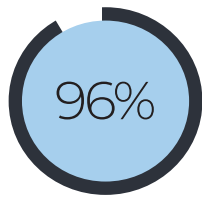
Xavier Vuillerme
Technical Director



Sebastien Ferreira
Production Director

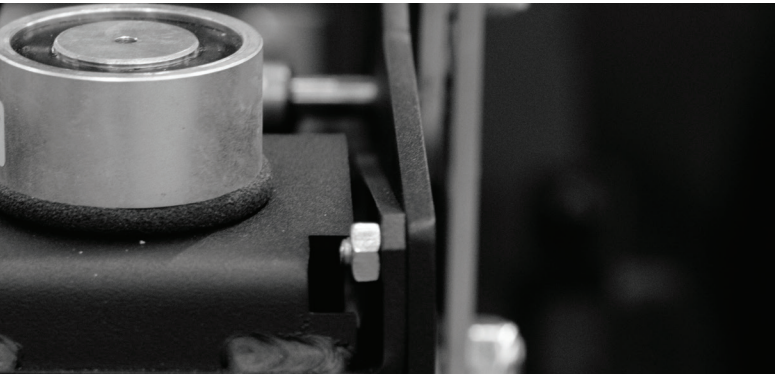


Anne-Julie Chauve
Marketing Director



CUSTOMER SATISFACTION

Yes, we have great products. Yes, we have competitive prices. And the future belongs to the experience around our products or services.



WHAT MAKES US SUCCESSFUL?



Professional Staff.

Our fully professional staff of experts includes specialists in the geographical areas and in the major applications.



Quality Achievement.

We are investing much time and effort in the management of quality. A few enlightened ones even have a vision to be the best.



+27%

RENEWAL RATE

By presenting the right product at the right price at the right time, we can create a value proposition that makes sense for the consumer.



Work With Love & Passion.

Loving our job is a wonderful thing. We get the added reward of feeling fulfilled, accomplished, and satisfied of each product.

RANDOM FACTS ABOUT US



32

Idea Innovation



115

Projects Done



31

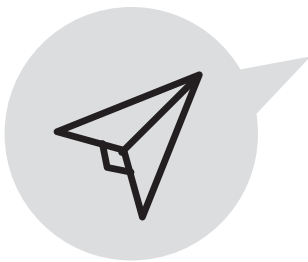
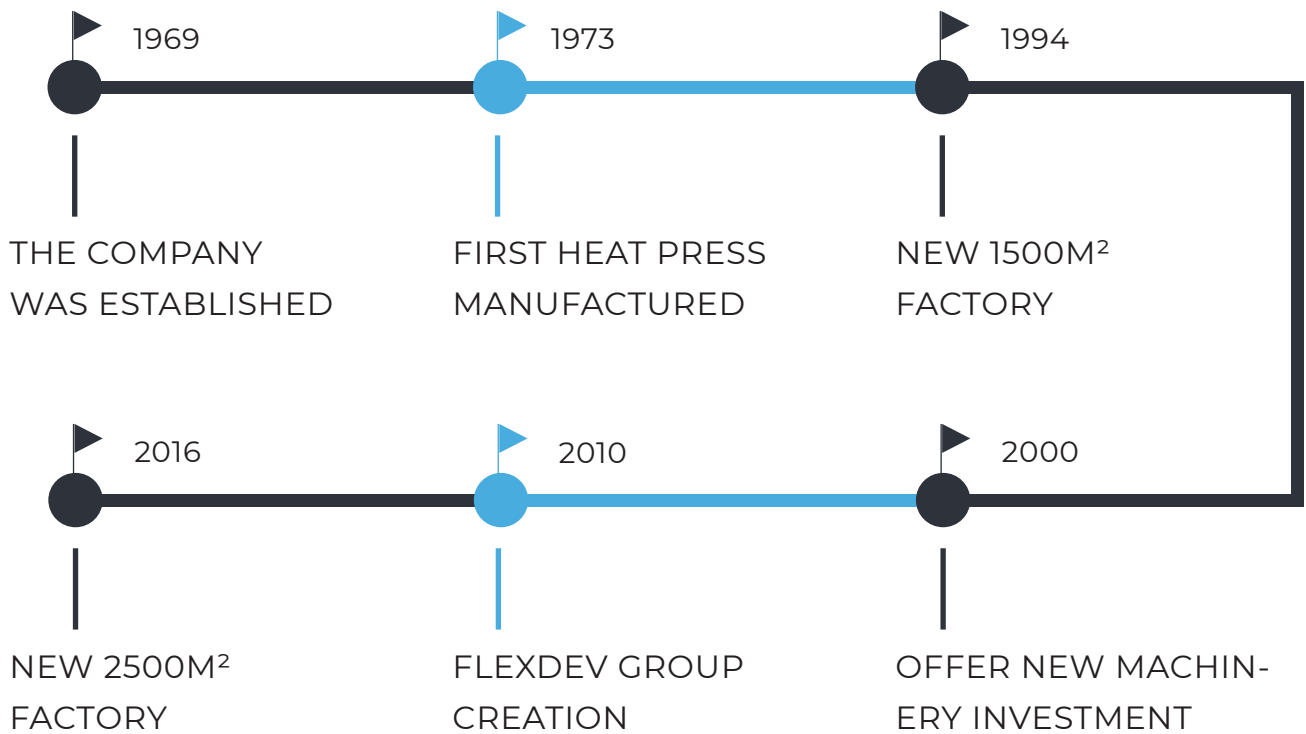
Currently Employees



5

Client Relationer

Company History



50 YEARS OF ACHIEVMENT

Established over 50 years ago, SEFA has helped hundreds of their customers and solved thousands of business problems. Today, our teams are dedicated to your success. Our understanding of the heat press systems and processes means you can expect fast, accurate and rewarding work from SEFA that meets exactly your needs.

We offer the
solution from
professional
research & market.



Product range

Eco Clam

Rotex range

Sport range

Large format range

Clam range

Duplex range

Logo range

Direct-to-Grament range

ECO RANGE

The ECLAM 50 is a space-saving clam press that is affordable, easy to use, and ideal for businesses that are just starting up and for small flex and screen transfer runs.

- Perfect heat & pressure distribution
- Plates of 40x50cm
- Ideal for small production or startup
- Optimized dimensions
- Manufactured in France
- 2-year warranty on the machine
- 10-year warranty on heating element



E-CLAM 50 AUTO WITH HANDLE



Electronics developed by Sefa.
Accurate and fast regulation (PID control) for a wide range of heat transfer products : Flex, flock, sublimation, screen printing transfer.

Advanced electronics
Double timer (main + pre-heat)
2 cycle counters, 3 settable programs, Stop cycle function.

From 0 to 570 sec (precision +/- 1%).
From 0 to 220°C (precision +/- 1%).
Heating time to reach 180°C : 15 min.

FEATURES



ELECTROMAGNETIC*



PRESETTINGS



PRE-HEAT MODE



2 YEAR WARRANTY



10 YEAR WARRANTY

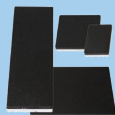
MODELS



ACCESSORIES

PLA-SET

Set of 4 plates, useful for precise work.
Dimensions:
12 x 8 cm - 15 x 15 cm
12 x 45 cm - 25 x 30 cm



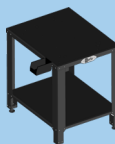
HOU-50

Heat resistant NOMEX® cover
to protect the lower plate and
make the threading easier



TAB-98-LITE

Strong support table perfect
for SEFA presses



ECLAM-HANDLE

Accessory that helps pressing
if original handle is to high



E-CLAM 50 REL

Weight	44 Kg
Pressure	254 gr/cm ²
Max Temperature	220°C
Power Supply	240V single phase
Electric Power	2500 W
Amperage	11 A
Plate	40x50 cm
Dimensions	857x742x455 mm
Packing	CAI-NO3
Features	Manual Closing Manual Opening

E-CLAM 50 AUTO *

Weight	45 Kg
Pressure	254 gr/cm ²
Max Temperature	220°C
Power Supply	240V single phase
Electric Power	2500 W
Amperage	11 A
Plate	40x50 cm
Dimensions	857x742x455 mm
Packing	CAI-NO3
Features	Manual Closing Automatic Opening

CLAM RANGE

The CLAM PRO was originally intended for applying flex and screen printing transfers in sports stores, but it's also suitable for medium-volume textile marking runs and especially sublimation printing on textiles, on rigid substrates (aluminum, MDF, wood, porcelain, etc), DTG and laser printing.

- Perfect heat & pressure distribution
- Drawer plate of 40x50cm
- Ideal for medium production & sports shops
- Optimized dimensions
- 180° reversible C-shaped lower part
- Automatic opening
- Suitable for laser transfers
- « DRY » option to dry direct printing
- Manufactured in France
- 2-year warranty on the machine
- 10-year warranty on heating element



Electronics developed by Sefa.

Accurate and fast regulation (PID control) for a wide range of heat transfer products : flex, flock, sublimation, screen printing transfer.

Advanced electronics

Double timer (main + pre-heat)

2 cycle counters, 3 settable programs,

Stop cycle function.

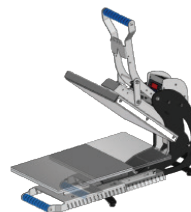
From 0 to 570 sec (precision +/- 1%).

From 0 to 220°C (precision +/- 1%).

Heating time to reach 180°C : 15 min.



CLAM PRO



Front slider plate
For a complete plate clearance



180° reversible C-shaped lower part and Quick Release system. To thread T-shirts either from the front or the back of the plate

FEATURES



ELECTROMAGNETIC



PRESETTINGS



PRE-HEAT MODE



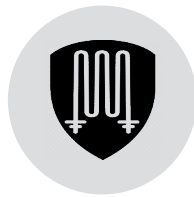
3200 W*



QUICK RELEASE



2 YEAR WARRANTY



10 YEAR WARRANTY



MEMBRANE**

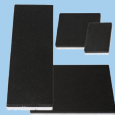
MODELS



ACCESSORIES

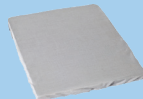
PLA-SET

Set of 4 plates, useful for precise work.
Dimensions:
12 x 8 cm - 15 x 15 cm
12 x 45 cm - 25 x 30 cm



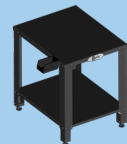
HOU-50

Heat resistant NOMEX® cover to protect the lower plate and make the threading easier.



TAB-98-LITE

Strong support table perfect for SEFA presses.



OPT-DRY

Dyeing option to cure/dry ink for direct-to-garment application.



PRESSURE SELECTOR

Set a different pressure in a simple way. From low to high pressure with a simple selector.



This option comes with the machine and can't be purchased separately

CLAM PRO / GPX *

Weight	58 Kg
Pressure	330 gr/cm ²
Max Temperature	220°C
Power Supply	240V single phase
Electric Power	2500 W / 3200 W (GPX)
Amperage	11 A / 14 A (GPX)
Plate	40x50 cm
Dimensions	969x990x453 mm
Packing	CAI-011
Features	Automatic Opening

CLAM AIR PRO **

NEW

Weight	62 Kg
Pressure	330 gr/cm ²
Max Temperature	220°C
Power Supply	240V single phase
Electric Power	2500 W
Amperage	11 A
Plate	40x50 cm
Dimensions	969x990x453 mm
Packing	CAI-011
Features	Automatic Opening Membrane plate compulsory needed

SWING RANGE

The high-power heating, sturdy frame and auto-swing function make the ROTEX the premier choice for multiple marking requirements such as medium-volume flex and screen printing transfer applications, sublimating on textiles and rigid substrates, DTG, and laser printing.

- Optimal heat & pressure distribution.
- Robust frame.
- Complete lateral clearance of the plate.
- Automatic opening by electromagnet (Lite and Pro).
- Automatic rotation at the end of the cycle (Pro).
- Strong pressure for laser application and pretreatment.
- Ideal for medium to advanced production.
- Manufactured in France.
- 2-year warranty on the machine.
- 10-year warranty on the heating element.



Rotex One
Rotex Lite

- Accurate and fast regulation (PID control) for a wide range of heat transfer products : Flex, flock, sublimation, screen printing transfer.
- Double timer (main + pre-heat)
- 2 cycle counters, 3 settable programs, Stop cycle function.
- From 0 to 570 sec (precision +/- 1%).
- From 0 to 220°C (precision +/- 1%).
- Heating time to reach 180°C : 15 min.



NEW ROTEX PRO



Rotex Pro

- User friendly touch screen
- Adaptative regulation parameters depending on the job: flex, sublimation on textile, sublimation on rigid substrates, DTG...
- Save up to 5 programs PER recipe, Sleep mode, Eco mode,
- Double timer (main + pre-heat), Cycle counters.
- From 0 to 600 sec (precision +/- 1%).
- From 15 to 220°C (precision +/- 1%).
- Heating time to reach 180°C : 10 mn.



180° reversible C-shaped lower part and Quick Release system. To thread T-shirts either from the front or the back of the plate

FEATURES



ELECTROMAGNETIC*



PRESETTINGS



PRE-HEAT MODE



TOUCH SCREEN**



QUICK RELEASE



2 YEAR WARRANTY



10 YEAR WARRANTY



ECO MODE**

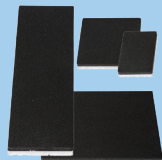
MODELS



ACCESSORIES

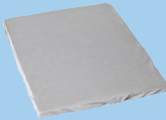
PLA-SET

Set of 4 plates, useful for precise work.
Dimensions:
12 x 8 cm - 15 x 15 cm
12 x 45 cm - 25 x 30 cm



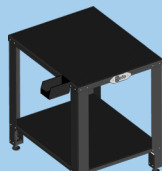
HOU-50

Heat resistant NOMEX® cover to protect the lower plate and make the threading easier



TAB-98-LITE

Strong support table perfect for SEFA presses.



CROI-161

Laser system to position your transfers with a greater precision.



ROTEX ONE

Weight	80 Kg
Pressure	590 gr/cm ²
Max Temperature	220°C
Power Supply	240V single phase
Electric Power	2500 W
Amperage	11 A
Plate	40x50 cm
Dimensions	759x909x569 mm
Packing	CAI-011
Features	Manual Opening Manual Swing

ROTEX LITE *

Weight	81 Kg
Pressure	590 gr/cm ²
Max Temperature	220°C
Power Supply	240V single phase
Electric Power	2500 W
Amperage	11 A
Plate	40x50 cm
Dimensions	759x909x569 mm
Packing	CAI-011
Features	Automatic Opening Manual Swing

ROTEX PRO v2 **

Weight	81 Kg
Pressure	590 gr/cm ²
Max Temperature	220°C
Power Supply	240V single phase
Electric Power	3200 W
Amperage	14 A
Plate	40x50 cm
Dimensions	759x909x594 mm
Packing	CAI-011
Features	Automatic Opening Automatic Swing

NEW

SWING RANGE Pneumatic

The pneumatic ROTEX AIR range is perfect for medium-volume of flex and screen printing transfer applications, sublimation on textiles and rigid substrates, DTG and laser printing, all with outstanding user comfort.

- Optimal heat & pressure distribution.
- Robust frame.
- Complete lateral clearance of the plate.
- Pneumatic closing & opening.
- Automatic rotation at the end of the cycle (PRO).
- Suitable for laser transfer applications & pretreatment.
- Ideal for medium production.
- Manufactured in France.
- 2-year warranty on the machine.
- 10-year warranty on the heating element.
- Compressor or air network compulsory needed.



Rotex Air Lite

- Accurate and fast regulation (PID control) for a wide range of heat transfer products : Flex, flock, sublimation, screen printing transfer.
- Double timer (main + pre-heat)
- 2 cycle counters, 3 settable programs, Stop cycle function.
- From 0 to 570 sec (precision +/- 1%).
- From 0 to 220°C (precision +/- 1%).
- Heating time to reach 180°C : 15 min.



NEW ROTEX AIR PRO



Rotex Air Pro

- User friendly touch screen
- Adaptative regulation parameters depending on the job: flex, sublimation on textile, sublimation on rigid substrates, DTG...
- Save up to 5 programs PER recipe, Sleep mode, Eco mode,
- Double timer (main + pre-heat), Cycle counters.
- From 0 to 600 sec (precision +/- 1%).
- From 15 to 220°C (precision +/- 1%).
- Heating time to reach 180°C : 10 mn.



180° reversible C-shaped lower part and Quick Release system. To thread T-shirts either from the front or the back of the plate

FEATURES



PNEUMATIC



PRESETTINGS



PRE-HEAT MODE



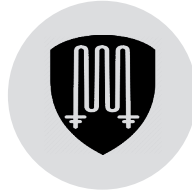
TOUCH SCREEN*



QUICK RELEASE



2 YEAR WARRANTY



10 YEAR WARRANTY



MEMBRANE**

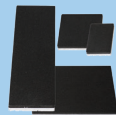
MODELS



ACCESSORIES

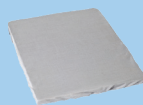
PLA-SET

Set of 4 plates, useful for precise work.
Dimensions:
12 x 8 cm - 15 x 15 cm
12 x 45 cm - 25 x 30 cm



HOU-50

Heat resistant NOMEX® cover to protect the lower plate and make the threading easier



TAB-98-LITE

Strong support table perfect for SEFA presses.



CROI-161

Laser system to position your transfers with a greater precision.



COMP-74

Silent compressor 42 dB(A) for Rotex range.



ROTEX AIR LITE

Weight	81 Kg
Pressure	400 gr/cm ²
Max Temperature	220°C
Power Supply	240V single phase
Electric Power	2500 W
Amperage	11 A
Plate	40x50 cm
Dimensions	621x847x572 mm
Packing	CAI-011
Features	Automatic Opening Manual Swing

ROTEX AIR PRO v2*

Weight	82 Kg
Pressure	400 gr/cm ²
Max Temperature	220°C
Power Supply	240V single phase
Electric Power	3200 W
Amperage	14 A
Plate	40x50 cm
Dimensions	621x847x597 mm
Packing	CAI-011
Features	Automatic Opening Automatic Swing

ROTEX AIR PRO MULTI v2**

Weight	86 Kg
Pressure	400 gr/cm ²
Max Temperature	220°C
Power Supply	240V single phase
Electric Power	3200 W
Amperage	14 A
Plate	40x50 cm
Dimensions	621x847x597 mm
Packing	CAI-011
Features	Automatic Opening Automatic Swing Membrane

DUAL PLATE RANGE

The DUPLEX range combines three operating modes, a foot pedal and an auto-shuttle function to bring user comfort and advanced features to large-volume marking work.

- Perfect heat & pressure distribution.
- Double plates of 40x50 cm.
- Robust frame.
- Important height between plates.
- User friendly :
- Bi-manual control (+ foot pedal control on PRO).
- Touch screen interface.
- Automatic translation from one plate to another (PRO).
- Suitable for laser transfer applications & pretreatment.
- Ideal for high production.
- Manufactured in France.
- 2-year warranty on the machine.
- 10-year warranty on the heating element.
- Compressor or air network compulsory needed.



- User friendly touch screen
- Adaptative regulation parameters depending on the job: flex, sublimation on textile, sublimation on rigid substrates, DTG...
- Advanced electronics
- 9 recipes menus depending on the job
- Save up to 5 programs PER recipe
- Sleep mode
- Eco mode
- Double timer (main + pre-heat)
- Cycle counters
- Stop cycle function .
- From 0 to 600 sec (precision +/- 1%).
- From 15 to 255°C (precision +/- 1%).
- Heating time to reach 180°C : 10 mn.



DUPLEX PRO



180° reversible C-shaped lower part and Quick Release system. To thread T-shirts either from the front or the back of the plate

FEATURES



PNEUMATIC



PRESETTINGS



PRE-HEAT MODE



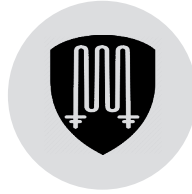
TOUCH SCREEN



QUICK RELEASE



2 YEAR WARRANTY



10 YEAR WARRANTY



MEMBRANE*

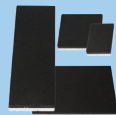
MODELS



ACCESSORIES

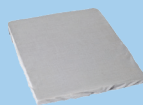
PLA-SET

Set of 4 plates, useful for precise work.
Dimensions:
12 x 8 cm - 15 x 15 cm
12 x 45 cm - 25 x 30 cm



HOU-50

Heat resistant NOMEX® cover to protect the lower plate and make the threading easier



TAB-98-PRO

Strong support table perfect for SEFA Duplex presses.



CROI-160

Laser system to position your transfers with a greater precision.



COMP-111

Silent compressor 42 dB(A) for Duplex range.



DUPLEX LITE

Weight	158 Kg
Pressure	625 gr/cm ²
Max Temperature	255°C
Power Supply	240V single phase
Electric Power	3200 W
Amperage	14 A
Plates	x2 40x50 cm
Dimensions	713x843x1079 mm
Packing	CAI-DU-PRO
Features	Automatic Opening Manual Swing

DUPLEX PRO

Weight	170 Kg
Pressure	625 gr/cm ²
Max Temperature	255°C
Power Supply	240V single phase
Electric Power	3200 W
Amperage	14 A
Plates	x2 40x50 cm
Dimensions	713x891x1079 mm
Packing	CAI-DU-PRO
Features	Automatic Opening Automatic Swing

DUPLEX AIR PRO *

Weight	193 Kg
Pressure	625 gr/cm ²
Max Temperature	255°C
Power Supply	240V single phase
Electric Power	3200 W
Amperage	14 A
Plates	x2 40x50 cm
Dimensions	713x891x1079 mm
Packing	CAI-DU-PRO
Features	Automatic Opening Automatic Swing Membrane

DUAL PLATE RANGE

The DUPLEX MINI and its two 16 x 16 cm platens makes light work of high-volume logo applications: just press both push-buttons at the same time to take the strain of closing the press go away. It can also be fitted with two cap platens for cap decorating.

User friendly :

Bi-manual control + foot pedal control (AUTO).

Touch screen interface.

Optimum distribution of pressure and heat.

Small format plate or cap heating element.

Efficiency and ease of use.

Ideal for advanced production.

Manufactured in France.

2-year warranty on the machine.

10-year warranty on heating element.

Compressor or air network compulsory needed.



DUPLEX AUTO MINI T

User friendly touch screen

Adaptative regulation parameters depending on the job: flex, sublimation on textile, sublimation on rigid substrates, DTG...

Advanced electronics

- 9 recipes menus depending on the job
- Save up to 5 programs PER recipe
- Sleep mode
- Eco mode
- Double timer (main + pre-heat)
- Cycle counters

Stop cycle function .

From 0 to 600 sec (precision +/- 1%).

From 15 to 255°C (precision +/- 1%).

Heating time to reach 180°C : 10 mn.

FEATURES



ECO MODE



PRESETTINGS



PRE-HEAT MODE



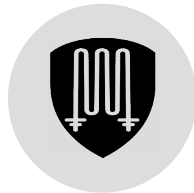
TOUCH SCREEN



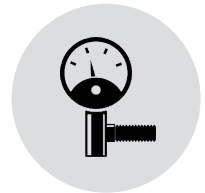
FOOT PEDAL*



2 YEAR WARRANTY



10 YEAR WARRANTY



PNEUMATIC

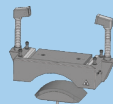
MODELS



ACCESSORIES

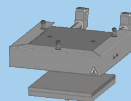
ACC-CAP DUPLEX MINI

Upper and lower plate for cap for DUPLEX MINI PLA and AUTO PLA



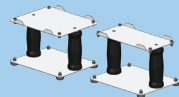
ACC-DUPLEX MINI

Upper and lower 16x16 cm plate for DUPLEX MINI and AUTO



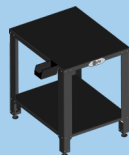
Special tools included :

These handles allow to manipulate and hot-swap the elements with safety guaranteed.



TAB-98-LITE

Strong support table perfect for SEFA presses.



COMP-37

Silent compressor 40dB(A) for Duplex Mini



DUPLEX (AUTO*) MINI T (for Cap)

Weight	60 Kg
Pressure	993 gr/cm ²
Max Temperature	220°C
Power Supply	240V single phase
Electric Power	600 W
Amperage	3 A
Plate	CAP 18 x 8 cm
Dimensions	625x646x941 mm
Packing	CAI-009
Features	Automatic Opening Manual Swing Automatic Swing (Auto version)

DUPLEX (AUTO*) MINI PLA T (for logo)

Weight	60 Kg
Pressure	993 gr/cm ²
Max Temperature	220°C
Power Supply	240V single phase
Electric Power	600 W
Amperage	3 A
Plate	LOGO 16 x 16 cm
Dimensions	625x646x941 mm
Packing	CAI-009
Features	Automatic Opening Manual Swing Automatic Swing (Auto version)

SPORT RANGE

The CLAM SPORT was the first ball press on the market, and lets you apply flex to ball while it is still inflated. The clever, switchable cradle quickly adjusts press height to change between different ball sizes in an instant. The CLAM SPORT can also accommodate a cap platen or a small platen for marking caps, shoes and logos.

- Suitable for balls, caps, logos and shoes
- Quick and tool-free change of elements
- Automatic opening
- Designed and manufactured in France
- 2-year warranty on the machine
- 10-year warranty on the heating element

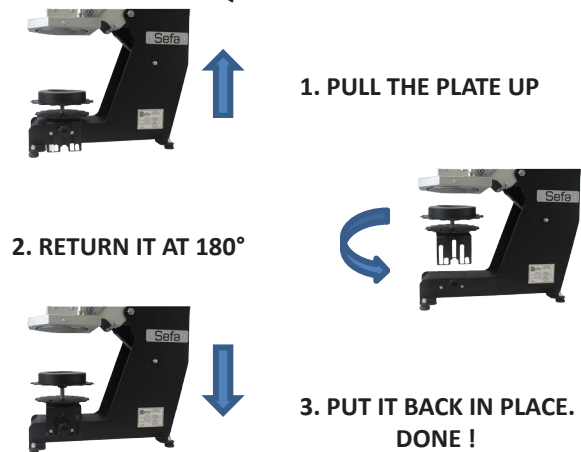


Electronics developed by Sefa.
 Accurate and fast regulation (PID control) for a wide range of heat transfer products : Flex, flock, sublimation, screen printing transfer.
 Double timer (main + pre-heat)
 2 cycle counters, 3 settable programs, Stop cycle function.
 From 0 to 570 sec (precision +/- 1%).
 From 0 to 220°C (precision +/- 1%).
 Heating time to reach 180°C : 15 min.



CLAM SPORT WITH ACCESORIES

QUICK SIZE CHANGE



FEATURES



ELECTROMAGNETIC



PRESETTINGS



PRE-HEAT MODE



2 YEAR WARRANTY



10 YEAR WARRANTY

MODELS



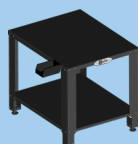
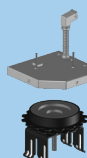
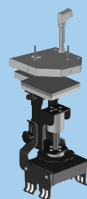
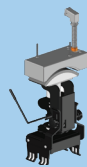
ACCESSORIES

ACC CAP CB
Upper and lower cap accessory.
Also available in US cap version :
ACC CAP CB US.

ACC SHL
Upper and lower logo and shoe
accessory.

ACC BALL
Upper and lower ball accessory.

TAB-98-LITE
Strong support table perfect
for SEFA presses.



Cap pressing area :
17 x 8 cm



Ball pressing area :
Size 0 to 7 + Rugby + US football



Shoe and logo pressing area :
13 x 13 cm

CLAM SPORT

Weight	24 Kg
Max Temperature	220°C
Power Supply	240V single phase
Electric Power	600 W
Amperage	3 A
Plate	not included
Dimensions	899x503x263 mm
Packing	CAI-SPORT
Features	Automatic Opening

Machine does not include any accessory.
Please choose yours with your order.

LOGO RANGE

The space-saving LM, LE and LP logo presses are the perfect solutions for low-volume logo applications.

- Perfect heat & pressure distribution
- Ideal for medium production & sports shops
- 13x13 cm plate
- Optimized dimensions
- Automatic opening (LE and LP)
- Suitable for laser transfers
- Manufactured in France
- 2-year warranty on the machine
- 10-year warranty on the heating element



LP 130 T



LM-130 REL

LE-130 L

- Accurate and fast regulation (PID control) for a wide range of heat transfer products : Flex, flock, sublimation, screen printing transfer.
- Double timer (main + pre-heat)
- 2 cycle counters, 3 settable programs, Stop cycle function.
- From 0 to 570 sec (precision +/- 1%).
- From 0 to 220°C (precision +/- 1%).
- Heating time to reach 180°C : 15 min.



LP-130 T

- User friendly touch screen
- Adaptative regulation parameters depending on the job: flex, sublimation on textile, sublimation on rigid substrates, DTG...
- Save up to 5 programs PER recipe, Sleep mode, Eco mode,
- Double timer (main + pre-heat), Cycle counters.
- From 0 to 600 sec (precision +/- 1%).
- From 15 to 255°C (precision +/- 1%).
- Heating time to reach 180°C : 10 mn.

FEATURES



ELECTROMAGNETIC*



PRESETTINGS



PRE-HEAT MODE



TOUCH SCREEN**



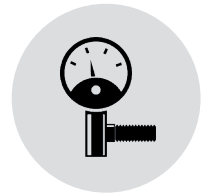
FOOT PEDAL**



2 YEAR WARRANTY



10 YEAR WARRANTY



PNEUMATIC**

MODELS



ACCESSORIES



TAB-98-LITE
Strong support table
perfect for SEFA presses.



COMP-37
Silent compressor
(42dB) for LP 130 T.



LM 130 REL

Weight	19 Kg
Pressure	600 gr/cm ²
Max Temperature	220°C
Power Supply	240V single phase
Electric Power	400 W
Amperage	2 A
Plate	13 x 13 cm
Dimensions	621x549x233 mm
Packing	AMERICAN
Features	Manual Opening



LE 130 L *

Weight	22 Kg
Pressure	600 gr/cm ²
Max Temperature	220°C
Power Supply	240V single phase
Electric Power	400 W
Amperage	2 A
Plate	13 x 13 cm
Dimensions	621x549x233 mm
Packing	AMERICAN
Features	Automatic Opening



LP 130 T **

Weight	25 Kg
Pressure	940 gr/cm ²
Max Temperature	220°C
Power Supply	240V single phase
Electric Power	400 W
Amperage	2 A
Plate	13 x 13 cm
Dimensions	498x544x274 mm
Packing	AMERICAN
Features	Automatic Opening Compressor compulsory needed

Line of Accessories

Lower Standard Plates

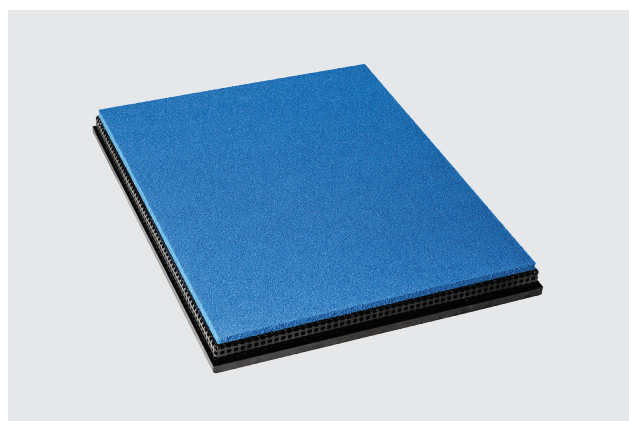
Special plates manufactured by SEFA. Available in kit or single, with special shapes for shoes. Includes support for old generation and quick release system.



CODE	SIZE
PLA-SET	Set with 48, 49, 50 & 51
PLA-48	15 x 15 cm
PLA-49	12 x 8 cm
PLA-50	25 x 30 cm
PLA-51	12 x 45 cm
PLA-3040	30 x 40 cm
PLA-4050	40 x 50 cm
PLA-SHOES CV	40 x 50 cm (for shoes)

Lower Direct-to-garment Plates

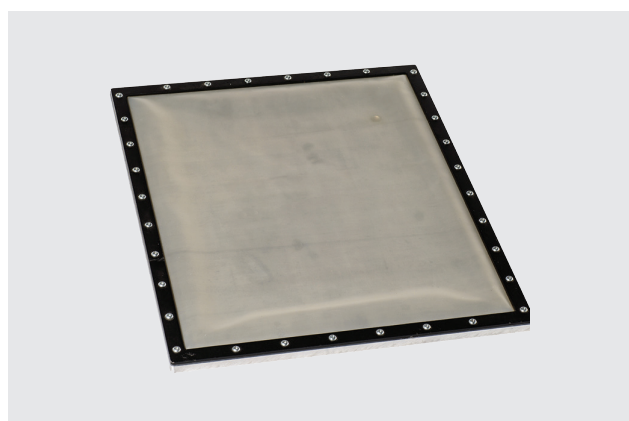
Special plates manufactured by SEFA for pre-treatment drying.



CODE	SIZE
PLA-DRY M	Sponge plate 40 x 50 cm
PLA-DRY M XL	Sponge plate 45 x 55 cm

Lower Membrane Plates

Special plates manufactured by SEFA for membrane presses.



CODE	SIZE
PLA-4050 AIRCLAM	40 x 50 cm
PLA-3035 AIRCLAM	30 x 35 cm

Nomex® Cover

Special Nomex® covers for lower standard plates.



CODE	SIZE
HOU-50	For 40 x 50 cm plate
HOU-3040	For 30 x 40 cm plate
HOU-2530	For 25 x 30 cm plate
HOU-1245	For 12 x 45 cm plate
HOU-4555	For 45 x 55 cm plate

Support Table

Special tables manufactured by SEFA for all heat presses (with holes to fix the press).



CODE	SUPPORT
TAB-98 LITE	For all presses except DUPLEX
TAB-98 LITE R	For all presses except DUPLEX (with castors)
TAB-98 PRO	For DUPLEX range
TAB-98 PRO R	For DUPLEX range (with castors)

Laser positioning system

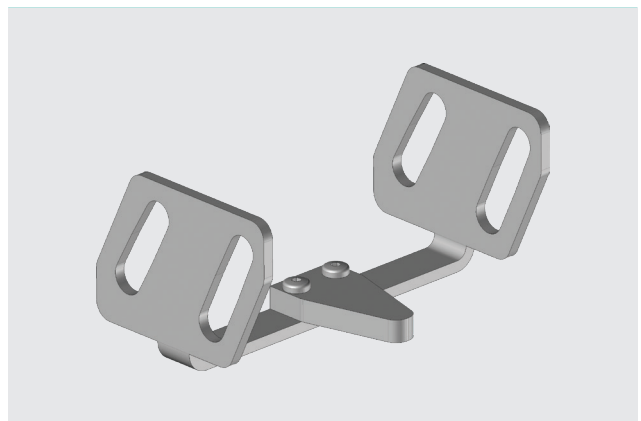
Special Laser system manufactured by SEFA for CLAM, ROTEX and DUPLEX range.



CODE	SUPPORT
CROI-160	For DUPLEX range (2 lasers)
CROI-161	For ROTEX range (1 laser)
CROI-160X4	For DUPLEX range (4 lasers)
LAS-PRO	Additional laser

Clam Pro specific accessories

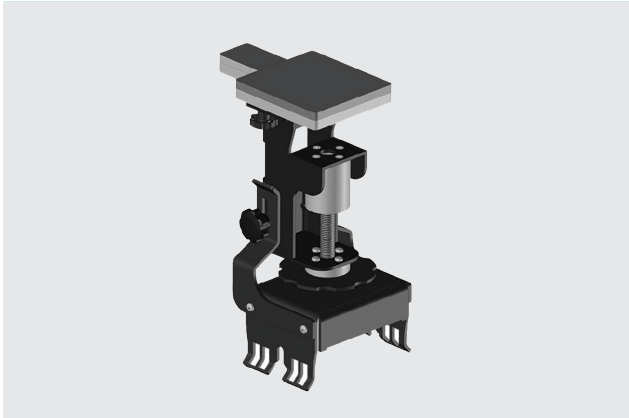
Special accessories dedicated to the CLAM PRO model.



CODE	SUPPORT
OPT-DRY	Dry option for DTG application
SEL-PRES	Pressure selector (can't be purchased separately)

Clam Sport specific accessories

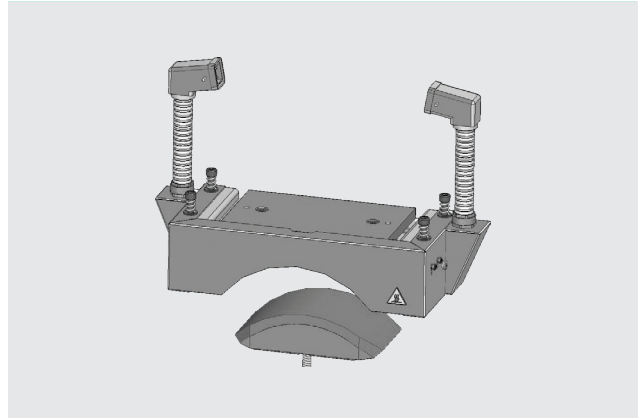
Accessories manufactured by SEFA specifically for the CLAM SPORT model.



CODE	SUPPORT
ACC-CAP CB	Upper & lower cap accessory
ACC-CAP US CB	Upper & lower US cap accessory
ACC-SHL CB	Lower logo & shoes accessory
ACC-SHOES	Upper & lower logo/shoes accessory
ACC-BALL	Upper & lower ball accessory
PLA-6 CB	Flat heating plate for ball and shoe
PLA-CB2	Lower ball accessory

Duplex Mini specific accessories

Accessories manufactured by SEFA specifically for the DUPLEX MINI model.



CODE	SIZE
ACC-DUPLEX MINI	Logo plate 16 x 16 cm
ACC-CAP DUPLEX MINI	Cap accessory 18 x 8 cm

Compressors

Silent compressors 42dB(A) specifically adapted to SEFA presses.



CODE	SUPPORT
COMP-37	For CLAM AIR PRO, ROTEX AIR LITE, DUPLEX MINI & LP 130 T
COMP-74	For ROTEX AIR PRO & DUPLEX LITE
COMP-111	For DUPLEX PRO & DUPLEX AIR PRO



**THE GOOD ACCESSORY
WILL HELP YOU DURING
BORING PROCESS.**

Great business
comes from
great products.



Large format range

SLIDE 865

SUBLI 1510+

SUBLI 1812+

SUBLIMAXI 2513

SLIDE 1285

SUBLITEX 1510+

SUBLITEX 1812+

SLIDE RANGE

The SLIDE range was created in partnership with ChromaLuxe, the world-leading manufacturer of high-quality, rigid sublimation substrates. The SLIDE's two independent heating areas give you the power to sublimate very high-definition images onto a range of substrates, including Textiles, aluminum, MDF, wood, tiles, etc.

- High thermal efficiency.
- Ideal for sublimation with good productivity and flexibility.
- Fast startup (15 min)
- Able to sublimate a complete 120x80cm plate (SLIDE 1285) or a complete 80x60 plate (SLIDE 865).
- Perfect heat distribution.
- 2-year warranty on the machine.
- 10-year warranty on the heating elements.
- Manufactured in France.



Electronics developed by Sefa.

- From 0 to 30 min (precision +/- 1%)
- From 0 to 230°C (précision +/- 1%)
- Heating time to reach 180°C : 15 min.
- Accurate and fast regulation (PID control) for a wide range of heat transfer products: Flex, flock, sublimation, screen printing transfer
- Advanced settings :
 - 4 recordable programs
 - Resettable counter
 - Double timer
 - Eco mode
 - User friendly touch screen
 - Heat sensor PT100



SLIDE 1285



FEATURES



PNEUMATIC



PRESETTINGS



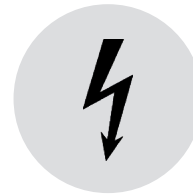
TOUCH SCREEN



2 YEAR WARRANTY



10 YEAR WARRANTY



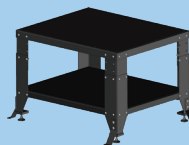
400V 3-PHASES*

MODELS



ACCESSORIES

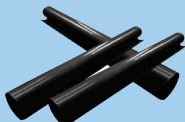
TABL-98 / R
Strong support table perfect for SEFA Slide presses.



TOI-N865 / TOI-N1285
Nomex for rigid substrate



TOI-T865 / TOI-T865
Teflon for textile application



COMP 74/111
Compressor for SEFA SLIDE
COMP 74 for SLIDE 865
COMP 111 for SLIDE 1285



SLIDE 865

Weight	261 Kg
Pressure	453 gr/cm ²
Max Temperature	255°C
Power Supply	240V single phase / 400V 3-phases
Electric Power	6000 W
Amperage	28 A / 9A
Plate	85 x 65 cm
Working area	80 x 60 cm
Dimensions	794x1756x893 mm
Packing	CAI-SLIDE
Features	Automatic Opening Automatic Closing Manual Drawing 2 Independent zones

SLIDE 1285 *

Weight	419 Kg
Pressure	386 gr/cm ²
Max Temperature	255°C
Power Supply	400V 3-phases
Electric Power	12000 W
Amperage	20 A
Plate	125 x 85 cm
Working area	120 x 80 cm
Dimensions	794x2153x1286 mm
Packing	CAI-SLIDE
Features	Automatic Opening Automatic Closing Manual Drawing 2 Independent zones

SUBLI RANGE

The SUBLI range was created in partnership with ChromaLuxe, the world-leading manufacturer of high-quality, rigid sublimation substrates. The SUBLI's two and 4 independent heating areas give you the power to sublimate very high-definition images onto a range of substrates, including Textiles, aluminum, MDF, wood, tiles, etc.

High thermal efficiency.

Ideal for sublimation with good productivity and flexibility.

Fast startup (15 min)

Able to sublimate a complete 150x100cm plate (SUBLI1510+) or a complete 180x120cm plate (SUBLI1812+) or a complete 240x120cm plate (SUBLIMAXI 2513).

Perfect heat distribution.

2-year warranty on the machine.

10-year warranty on the heating elements.

Manufactured in France.

Electronics developed by Sefa.

From 0 to 30 min (precision +/- 1%)

From 0 to 230°C (précision +/- 1%)

Heating time to reach 180°C : 15 min.

Accurate and fast regulation (PID control) for a wide range of heat transfer products: Flex, flock, sublimation, screen printing transfer

Advanced settings :

4 recordable programs

Resettable counter

Double timer

Eco mode

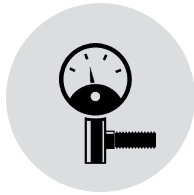
User friendly touch screen

Heat sensor PT100



SUBLIMAXI 2513

FEATURES



PNEUMATIC



PRESETTINGS



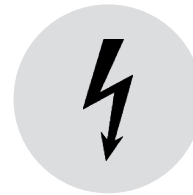
TOUCH SCREEN



2 YEAR WARRANTY

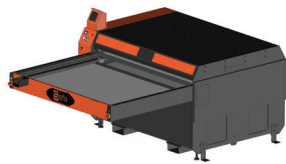


10 YEAR WARRANTY



400V 3-PHASES

MODELS



SUBLI / TEX 1510 +



SUBLI / TEX 1812 +



SUBLIMAXI 2513

Weight	1000 Kg	NEW	1394 Kg	NEW	2180 Kg
Pressure	296 gr/cm ²		378 gr/cm ²		318 gr/cm ²
Max Temperature	220°C		220°C		220°C
Power Supply	400V 3-phases		400V 3-phases		400V 3-phases
Electric Power	20250 W		30250 W		35000 W
Amperage	32 A		46 A		56 A
Plate	157 x 107 cm		187 x 127 cm		255 x 130 cm
Working area	152 x 102 cm		182 x 122 cm		250 x 125 cm
Dimensions	1370x2740x2019 mm		1396x3000x2249 mm		1446x3202x3007 mm
Packing	CAI-SUBLI		CAI-SUBLI		CAI-SUBLI-2513
Features	Automatic Opening Automatic Closing Automatic Drawing 2 Plates 2 heating zones		Automatic Opening Automatic Closing Automatic Drawing 2 Plates 2 / 4 heating zones		Automatic Opening Automatic Closing Automatic Drawing 2 Plates 4 heating zones



ACCESSORIES

COMP 240/300
Compressor for SEFA SUBLI
COMP 240 for SUBLI 1510 +
COMP 300 for SUBLI 1812 +



ASP-SUBLI
Exhaust system for SUBLI range
The SUBLI 2513 needs two units



Line of Accessories

Teflon® Cover

Special Teflon® covers for heating plate for SLIDE and SUBLI heat presses.



CODE	SUPPORT
TOI-T865	For SLIDE 865
TOI-T1285	For SLIDE 1285
TOI-T1510+	For SUBLI 1510+
TOI-T1812+	For SUBLI 1812+
TOI-T2513	For SUBLIMAXI 2513

Nomex® Cover

Special Nomex® covers for heating plate for SLIDE and SUBLI heat presses.



CODE	SUPPORT
TOI-N865	For SLIDE 865
TOI-N1285	For SLIDE 1285
TOI-N1510+	For SUBLI 1510+
TOI-N1812+	For SUBLI 1812+
TOI-N2513	For SUBLIMAXI 2513

Support Table

Special tables manufactured by SEFA for SLIDE heat presses (with holes to fix the press).



CODE	SUPPORT
TAB-98	For SLIDE models
TAB-98 R	For SLIDE models (with castors)

Nomex® Felt

Special Nomex® felt for lower plate for SLIDE and SUBLI heat presses.



CODE	SUPPORT
FEU-865	For SLIDE 865
FEU-021	For SLIDE 1285
FEU-020	For SUBLI 1510+
FEU-018	For SUBLI 1812+
FEU-025	For SUBLIMAXI 2513

Transport

Special pallets and cranes for SUBLI heat presses.



CODE	SUPPORT
PAL-SUBLI	Pallet for SUBLI 1510+ and 1812+
PAL-SUBLI 2513	Pallet for SUBLIMAXI 2513
CAI-SUBLI	Crane for SUBLI 1510+ and 1812+
CAI-SUBLI 2513	Crane for SUBLIMAXI 2513

Sublimation consummable

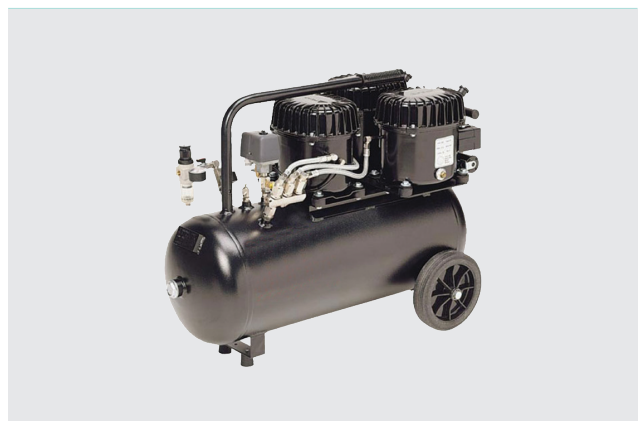
Sublimation paper and Endura® fabric approved by ChromaLuxe for High definition transfer.



CODE	SIZE
END-CH1	Endura® fabric 150 cm x 22 m.
SE-44100	110 gr/cm ² - 44" x 30 m.
SE-64300	110 gr/cm ² - 64" x 100 m.

Compressors

Silent compressors 42dB(A) specifically adapted to SEFA large format heat presses.



CODE	SUPPORT
COMP-74	For SLIDE 865
COMP-111	For SLIDE 1285
COMP-240	For SUBLI 1510 +
COMP-300	For UBLI 1812 +

FLEXDEV OVERVIEW



OUR VISION

Flexdev belongs to Dentressangle.

Dentressangle is an industrial investment family holding company and is made up of experts who commit themselves to supporting entrepreneurs through operational know-how and tailor-made support.

OUR MISION

Dentressangle works alongside entrepreneurs in two major areas:

Investment in companies, by financing, accompanying and developing projects with tailored approach and investment for companies, by developing a real estate offer through logistics platforms, business premises or office buildings to support their development.

OUR MEMBERS

1  **Sefa**

SEFA is designer and manufacturer of heat transfer presses for the textile industry, quality Made in France, for over 50 years.

2  **Chemica**

Chemica provides a range of innovative, high-quality, stand-out products for the visual communications and textiles markets.

3  **Elms**

Elms marketing is a leading supplier and service provider to the Sportswear and personalization sector.

4  **Stilscreen**

Stilscreen has been manufacturing screen printing heat transfers for over 40 years. Our products are used for decorations and embellishments of fabrics.

More Creative
and Innovative for
Smarter Products.



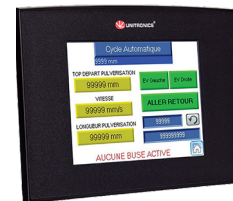
Direct-to-Garment range
Initium range

iSPRAY 2
TUN-DTG
T-DRY DTG
iMUG C / iCAP E

PRETREATMENT RANGE

The iSPRAY 2 was created to prepare garment for direct-to-garment printing technology with white ink. The pretreatment sprayed by the iSPRAY 2 on the dark garment will allow you to print directly your design.

- Ideal for continuous production
- Optimize your direct to garment printings on dark T-shirts
- Consistent and uniform pre-treatment spraying
- 2 spray nozzles with settable number of active nozzles
- Non-return valves for pristine spray action
- Anti-clogging nozzle system
- Automatic cleaning cycle and nozzle moisturizing
- Single-pass or return-pass spray action
- 2-year warranty.
- Made in France.



iSPRAY 2

- Electronics developed by Sefa. :
- Touch Screen
- Centralization of all parameters on the user friendly Touch screen.
- Checking nozzle activation
- Counter with reset
- Energy saving
- Cycle counter
- Pinpoint spray area adjustment
- Adjustable nozzle height and width
- Adjustable nozzle travel speed

FEATURES



2 YEAR WARRANTY



PRESETTINGS



TOUCH SCREEN

MODELS

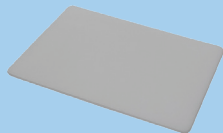


ACCESSORIES

NET-CO2
Ultrasonic cleaner for iSPRAY 2
nozzles.



iSPRAY-KITJUNIOR
20 x 30 cm plate for iSPRAY 2



BU-ISPRAY2
Spray nozzle quick release (1/4)
for iSPRAY 2



iSPRAY 2

NEW

Weight	95 Kg
Power Supply	240V single phase
Electric Power	300 W
Amperage	1,3 A
Plate	40 x 50 cm
Number of nozzles	2
Dimensions	600x1570x645 mm
Packing	CAI-ISPRAY2
Features	Manual drawer Automatic cleaning

DRYER RANGE

The new generation of SEFA Dryers gives you more productivity. You are looking for an independent machine to dry your shirts, or for a simple machine that doesn't not take too much space... Take a look at our range.

- Specially assembled for DTG ink drying
- Perfect heat distribution
- Very high quality and strong body
- Variable feed speed and air flow (TUNEL VERSION)
- 2-year warranty on the machine
- 10-year warranty on heating elements
- Manufactured in France



TUN-DTG

Regulator with PID controller
Potentiometers for settings
From 0 to 160°C takes 10 min.

Thermo-regulator with PID controller
Friendly easy-to-use Touch screen
From 0 to 160°C takes 10 min.



TDRY-DTG



TUN-DTG / TDRY DTG

FEATURES



CONVECTION DRYER*



MANUAL DRAWER**



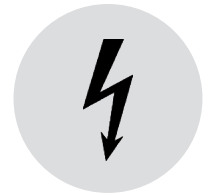
VARIABLE SPEED*



2 YEAR WARRANTY

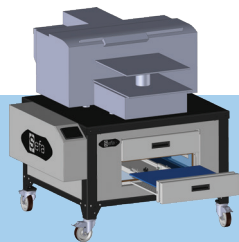


10 YEAR WARRANTY



400V 3-PHASES*

MODELS



**AS SUPPORT TABLE, IT
FITS ALL THE COMMON
DTG PRINTER MODELS.**

TUN-DTG *

NEW

Weight	390 Kg
Power Supply	400V 3-phases
Electric Power	12000 W
Amperage	20 A
Belt Width	800 mm
Belt Length	2500 mm.
Max. Air Flow	1000 m ³ / h.
Dimensions	1260 x 1200 x 2600 mm
Features	Convection dryer For Direct-to-Garment

TDRY-DTG **

NEW

Weight	387 Kg
Power Supply	230V single phase
Electric Power	3600 W
Amperage	16 A
Plate Size	540 x 410 mm
Max. Air Flow	1000 m ³ / h.
Dimensions	800 x 1350 x 1750 mm
Features	Convection dryer 2 Manual drawers Used as a support table for your DTG printer.

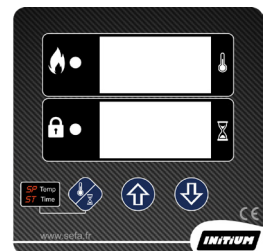
INITIUM RANGE

Initium offers entry level products for your business. Flex, flock, sublimation and even laser transfers are a daily task for Initium heat presses. It offers a solution for all your creative ideas on mugs and caps.

- Even heat distribution
- Edged Weaver heat element
- Durable heat mats
- Easy to use digital display
- 3-second warning system
- Super fast heat-up
- Manufactured in China
- 1-year warranty on the machine

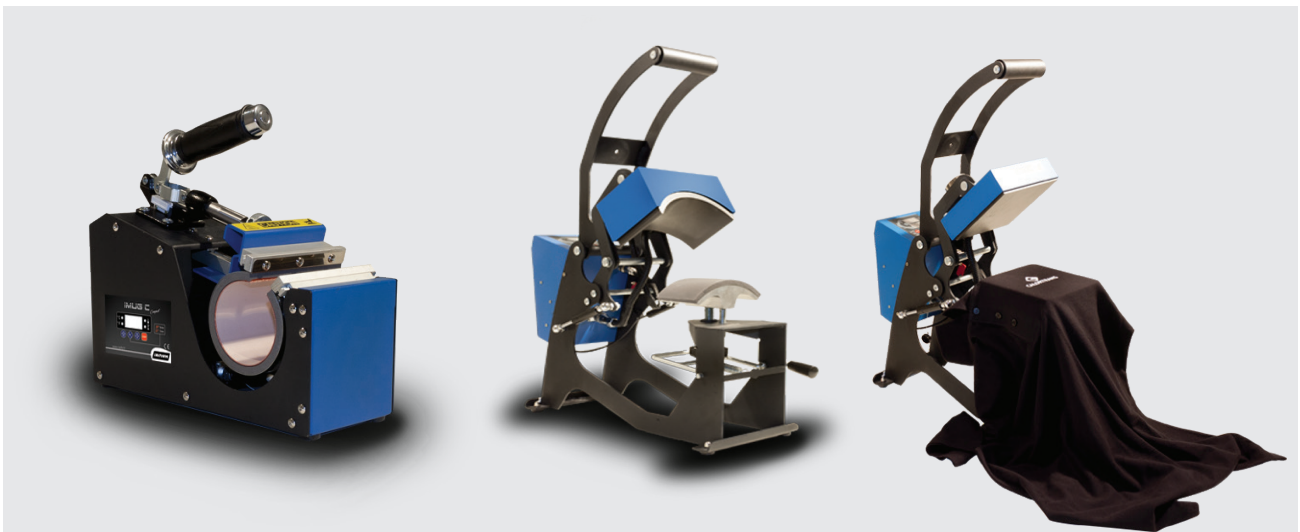


iMUG C



iCAP E

- Ajustable Thermo-regulator
- Timer for time settings
- From 0 to 160°C takes 5 minutes



iMUG "C" / iCAP "E" / iCAP "E" with flat element

FEATURES



ELECTROMAGNETIC **



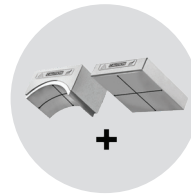
FAST HEATING



VARIABLE SIZES *



1 YEAR WARRANTY



CAP AND FLAT PLATE **

MODELS



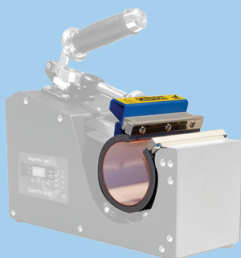
ACCESSORIES

RES-IMUGC 70
Ø70 cylindrical resistance for iMUG C

RES-IMUGC 80
Ø80 cylindrical resistance for iMUG C

RES-IMUGC 90
Ø90 cylindrical resistance for iMUG C

RES-IMUGC CONIC
Conical resistance for iMUG C



iMUG C *

NEW

Weight	5 Kg
Power Supply	220 V
Electric Power	400 W
Amperage	2 A
Element supplied	Ø80 mm
Features	Perfect for mug decorated by sublimation.

iCAP E **

NEW

Weight	8 Kg
Power Supply	220 V
Electric Power	600 W
Amperage	3 A
Element supplied	Cap 15x8 cm Flat 15x15 cm (option)
Features	Perfect for cap and logo decoration.

OUR SERVICES

More than just a product, SEFA brings you an entire service solution to help you taking the best of your business application, to enjoy 100% of your device possibility.

It's inevitable, like your car, your SEFA heat press will need service or repair. When the time comes, you have three options, depending on timing constraints, type of repair or service and proximity of service locations. We will help you creating and managing your support and warranty requests. By phone, mail, or through our helpdesk service center, just select your product and we will connect you to an expert. Moreover, our dedicated technical

service will bring you different ways of additional support like maintenance contract, device / application training, installation of your brand new heat press, and will also help you finding the best products for your global application and solution to use each element at their proper use. By phone or at our factory, we can give you the keys to a profitable investment that fits your business.



Assembly Center

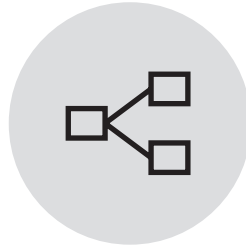


WHAT WE CAN DO



TECHNICAL SUPPORT

Our Global Technical Services team puts our customers first by delivering outstanding service that embodies our core values, ensuring they have the right products and knowledge to conduct business successfully. Team members contribute to the customer experience and provide support that empowers our customers to do their best work.



INSTALLATION

We designed SEFA products to be easy to install yourself, but there might be times when you'd like a professional to do it. A SEFA technical Pro can handle installation from start to finish, get everything set up for you, and answer any questions you may have. For certain SEFA products, a technical Pro installation can also extend your warranty.



END USER TRAINING

Training of the end users is one of the most important steps for a successful system implementation. The end users should be utilized during parallel testing, so training will need to be rolled out prior to that. Getting the end users involved at this point is also a good way to get them excited about the system.



RECOMMENDATION

Need a heat press? The SEFA technical support will give you the best advice depending on your business application, your office area, and the way you want to use it. They will help you finding the best global solution.



RECONDITIONING

Every SEFA refurbished product completes a rigorous refurbishment process that includes full testing that meets the same functional standards as new SEFA products. Your refurbished device is truly "like new".



APPLICATION TRAINING

At our training centres in Esperaza, we provide in-depth product and application training, workshops and seminars to ensure our customers they get the very best out of their SEFA products.

The more creative and innovative we are, the more long-term success we'll achieve. So rather than constantly chase "the next big idea" in our industry, bring creativity and innovation to what we're currently doing.

Discussions about innovation are often made difficult because people are unclear about the exact meanings of some key terms. In particular there is confusion about the difference between creativity, innovation and invention. Let us start with some definitions:

Creativity is the capability or act of conceiving something original or unusual

Innovation is the implementation of something new.

Invention is the creation of something that has never been made before and is recognized as the product of some unique insight.

If you have a brainstorm meeting and dream up dozens of new ideas then you have displayed creativity but there is no innovation until something gets implemented. We have to take a risk and deliver something for a creative idea to be turned into an innovation. An invention might be a device or method that has never existed before. So every invention is an innovation. But every innovation is not an invention.



Quick Release system

MORE CREATIVE & INNOVATION

We tend to think of an innovation as a new product but we can innovate with a new process, method, business model, partnership, route to market or marketing method. Indeed every aspect of our business operation is a candidate for innovation. So we do not restrict our vision of innovation to products. Some of the most powerful innovations we made are in development methods and customer services.



ONLINE PRODUCT CATALOG.

SEFA website empowers our products to provide customers with an accurate, online product catalog that shows our innovative devices, sharing our technical elements to fit your application enquiries.

<https://www.sefa.fr>



MULTILINGUE



VIDEOS



MANUALS



TECHNICAL



SECURE ACCESS



CONTACT



HEAT TRANSFER TECHNOLOGIES

a company of



✉ Email

sales@sefa.fr
support@sefa.fr
www.sefa.fr

☎ Phone

Office : + 33 4 68 74 05 89
Fax : + 33 4 68 74 24 08

📍 Address

SEFA SAS
Z.I. PASTABRAC
11 260 ESPERAZA
FRANCE